

A complex network diagram with various sized nodes (black, blue, grey) connected by thin grey lines. Some nodes are highlighted with larger circles or concentric circles. The background is light grey with faint circular patterns.

AI-ENHANCED DISCOVERY TOOLS TO HELP YOU STAY CURRENT: LEVERAGING SCITRUS AND META

Wei Zhang & Andrea McLellan

Filter feeds

FEEDS (30)

- Hacker News
- Designer News
- Medium
- Dribbble
- TechCrunch
- The Verge
- Product Hunt
- Behance
- Github
- Awwwards

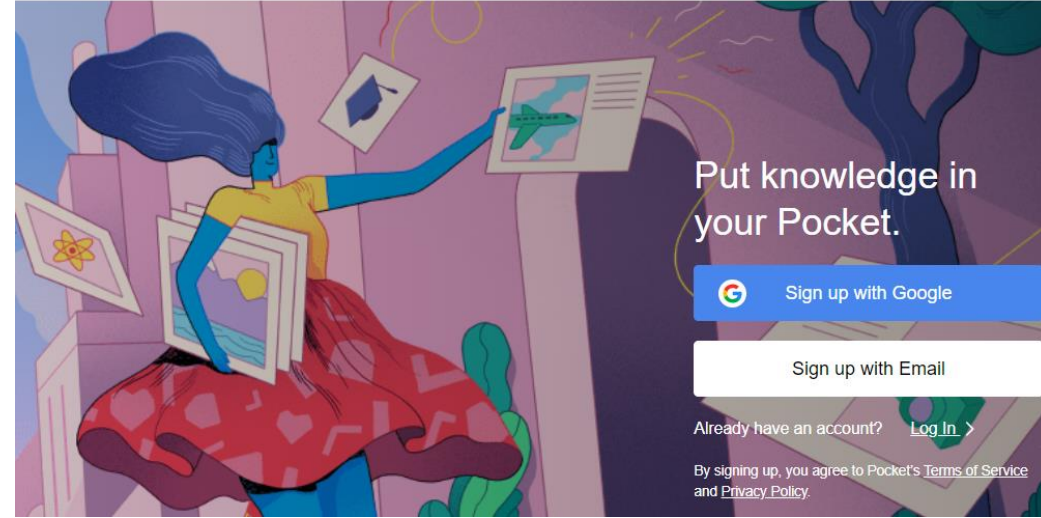
+ Add feeds



Goodbye information overload

Keep up with the topics and trends you care about, without the overwhelm

[GET STARTED FOR FREE](#) [SEE HOW LEO WORKS](#)



Apple News+
Hundreds of magazines and leading newspapers.
One subscription.

(e) Science News

About Spread the word! Science news archive Contact

Updated by artificial intelligence 12 min ago [Learn more](#)

Tell your friends

Get science news via

- ASTRONOMY SPACE
- BIOLOGY NATURE
- ENVIRONMENT CLIMATE
- HEALTH MEDICINE
- ECONOMICS MATH
- PALEONTOLOGY ARCHAEOLOGY
- PHYSICS CHEMISTRY
- PSYCHOLOGY SOCIOLOGY

Search news

SCIENTIFIC DISCOVERY TOOLS

- Information overload when navigating scientific literature
- How can AI-enhanced discovery tools help?
 - **Scitrus** and **Meta** offer a way to harness the deluge of information by creating customized feeds to fit individual research needs
 - **Sematic Scholar** enables researchers to navigate research literature much more efficiently by extracting meaningful information with a deep semantic analytic engine, which is covered in [*Scientific Discovery Tools LibGuide*](#).

WHAT IS SCITRUS?

- Released in October 2019 by Atypon
- Free scientific content discovery service, which
 - aims to help researchers combat information overload
 - delivers real-time, individualized research feed
 - puts artificial intelligence and machine learning to work
 - searches 30,000+ sources daily
 - allows researchers less time searching and more time reading

WHAT ARE THE BENEFITS?

- Real time
- Save time
- Improved reading experience

WHAT ARE THE FEATURES?

- Get on board fast
- Customize your feed
- Discover now, read later

Coronavirus Pandemic Special Edition:

<https://www.scitrus.com/special/novel-coronavirus-outbreak>

www.scitrus.com

WHAT IS META?

- Free AI-driven, scientific content discovery service
- Fewer "bells & whistles" than Scitrus
- Focus on biomedical research
 - Pulls content from PubMed and preprints from bioRxiv, medRxiv, q-bio, ResearchSquare, Preprints.org, chemRxiv, and OSF

WHAT ARE THE BENEFITS?

- Up-to-Date with PubMed and preprint platforms
- Easy set-up
- A great way to set up alerts for PubMed without using Medical Subject Headings (MeSH)
- AI takes care of refining the search profile

WHAT ARE THE FEATURES?

- Refine by 9 article types
- Share the URL for your Feed with students and colleagues
- View abstract and references, create library, syncs with Mendeley
- Link through to PubMed, PDF, and see social media impact

www.meta.org



Set up your own account!

LibGuide on Scientific Discovery Tools:

<https://libguides.mcmaster.ca/scientificdiscovery>

QUESTIONS?

Wei Zhang

*E-Resources & Collections
Analysis Librarian*

zhangw94@mcmaster.ca

Andrea McLellan

*Head of Collections & Technical
Services, Health Science Library*

mclell@mcmaster.ca